

EnviWEB

Internet Web Site System Prepared For National & Regional AQM Network

EnviWeb is designed to allow you to publish your environmental data which has been captured using Enview2000 environmental data management software onto the World Wide Web. Designed especially with the needs of public bodies and other agencies with a responsibility for environmental monitoring and reporting, EnviWeb provides a simple route to publication either to concerned citizens or within your organization through an Intranet.

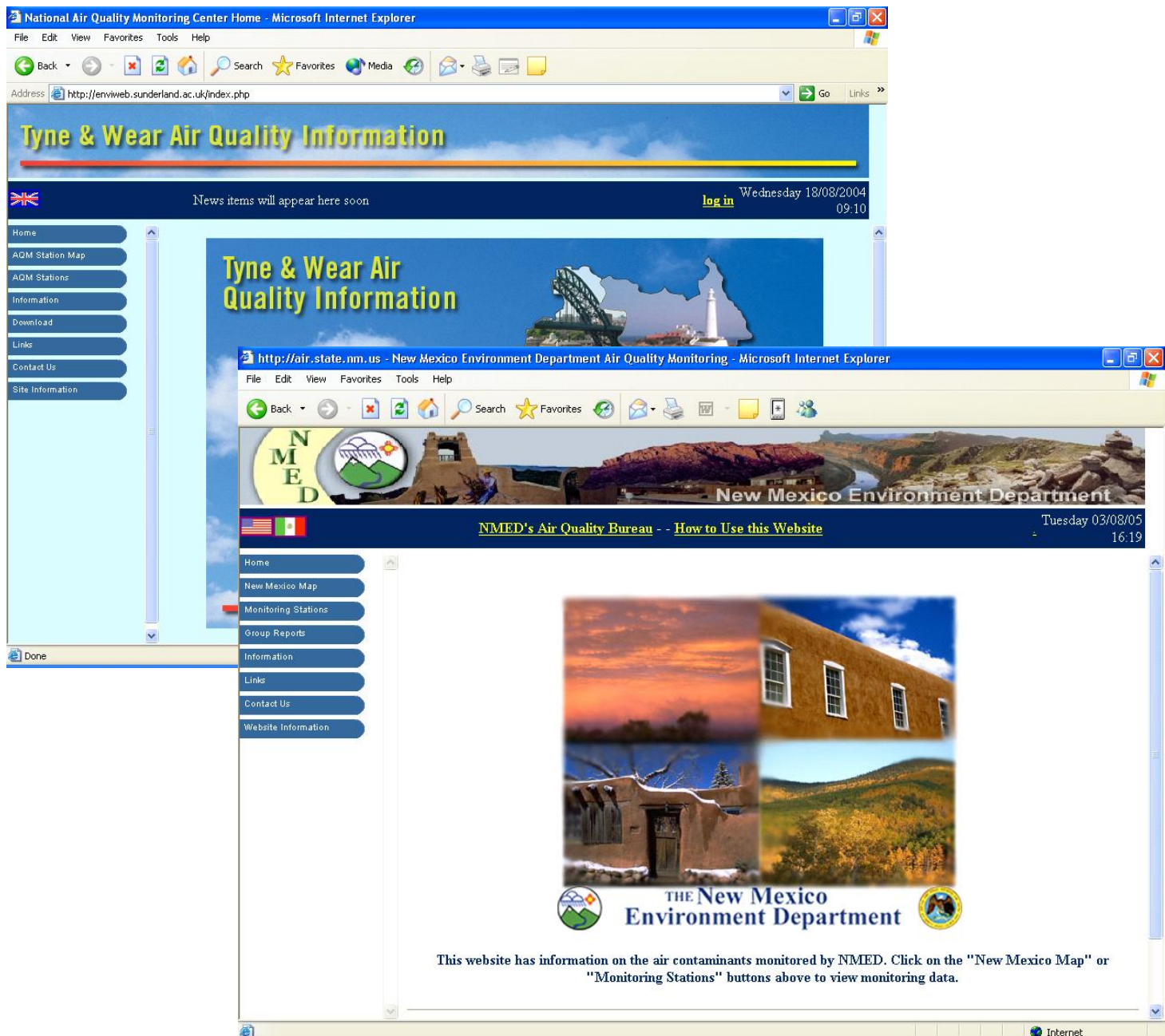


Figure 1- Welcome Screen

Visitors to the web site are presented with the welcome screen, tailored to your choice of language. The site employs frames to provide a consistent look and feel throughout the site; a top banner contains the site title, language selection using flag icons and the locale specific date and time for the chosen country locale.

The menu frame on the left hand side can be configured to operate as simple link buttons or, if preferred, as an animated menu which reveals sub-choices in addition to, or instead of, displaying a list of choices in the data area to the right of the menu.

Main Software Features

- Microsoft Windows 2000/2003 or Linux Server
- SQL Server 2000, ORACLE 9i, MySQL, PostgreSQL
- Multi-lingual design
- Completely menu-driven
- National, Regional and City Map Navigation tools
- On-Line data transfer from Enviro2000 via LAN/WAN or FTP
- Periodic textual and graphical reports
- Download reports as ASCII, Excel and PDF Files
- AQM General information screens
- Download area of monthly and annual reports
- Links to Environmental Monitoring and Information sites
- Contact screen
- Complete remote administration tools

AQM Station Map

A map can be displayed of the entire area covered by the environmental monitoring stations, The AQM Station Map is divided to different regions (seen in figure 2).

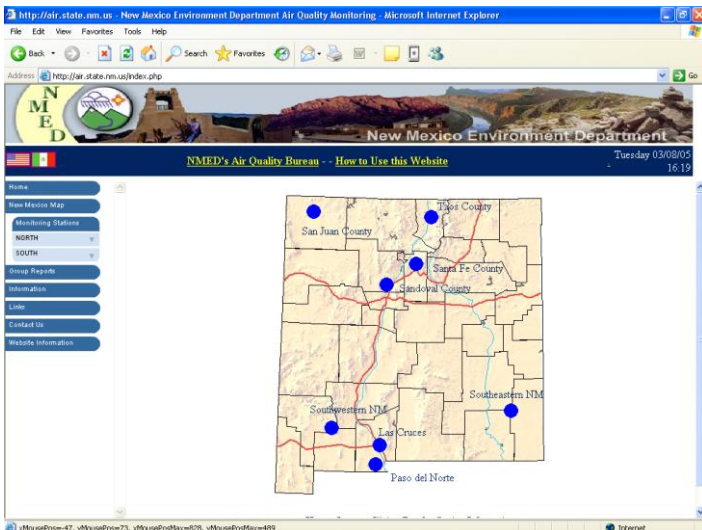


Figure 2- AQM Station Map

If the mouse is left above a 'hot-spot' without being clicked, a small information screen will be displayed with information regarding the region. This information is configured by the site administrator and will be translated into the local viewing language being used, provided the site administrator has made the necessary translations. When clicking on a region, a detailed map of that region will be displayed (as seen in figure 3).

Regional Map

A regional map is displayed in response to selection of a 'hot-spot' on the national map display. A regional map has a number of 'hot-spot' areas which represent any combination of cities or stations - the precise combination of cities or stations which are shown is configured by the site administrator.

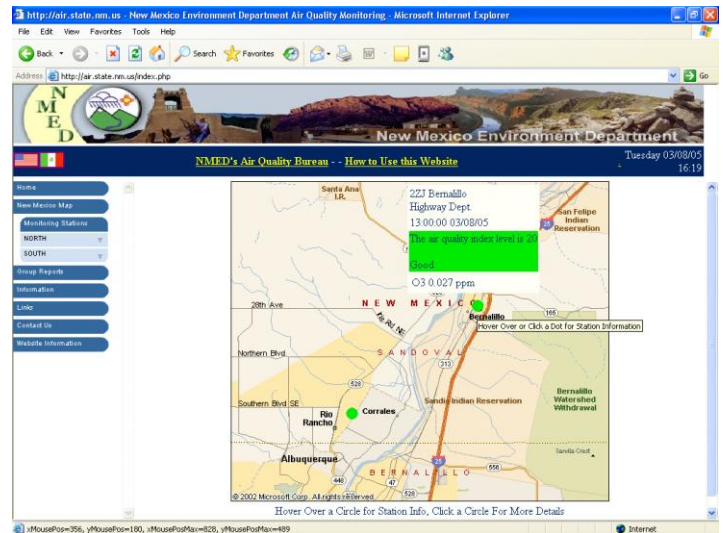


Figure 3- Regional Map

By clicking on a station 'hot-spot', the display will then switch to an information display for the selected station.

Station Summary Information

When a station is selected, either from the map display or from the menu system, a summary screen is shown with basic information regarding the monitoring station and the latest available data for each monitored channel.

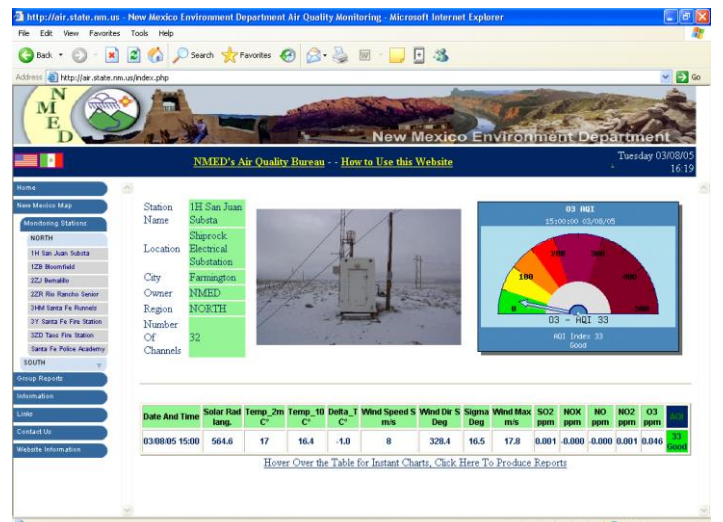


Figure 4- Station Summary Information

In order to create reports from the station, mouse click on the report creation hyperlink located on the bottom of the Station Summary Information page.

Report Creation Menu

It is possible to create a report for a station, it is first necessary to enter the reporting parameters using the parameter entry screen.

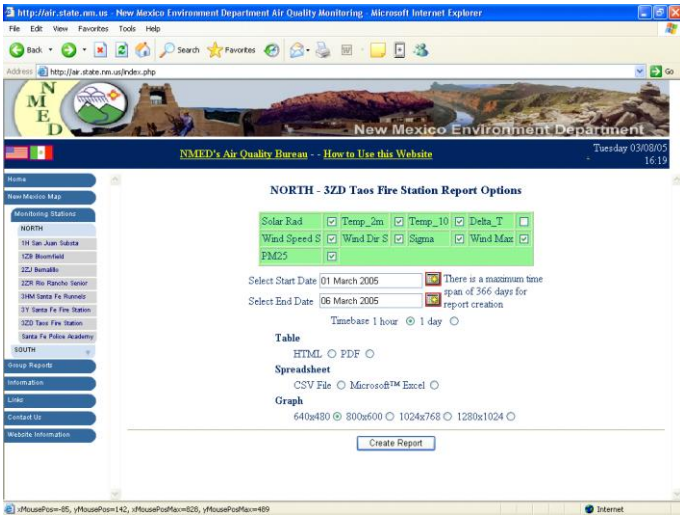


Figure 5- Entering Report Creation Parameters

The parameter entry screen is used to select the channels which will be included in the report, the reporting period and frequency and the format of the report to be produced. Each channel to be reported is selected by use of the check-box entry. Check a channel to include it and clear the check-box to exclude it from the report. When a date entry is required, a pop-up window is displayed to allow a date to be selected by reference to a more familiar calendar image.

A variety of report types are available :

- **Table**

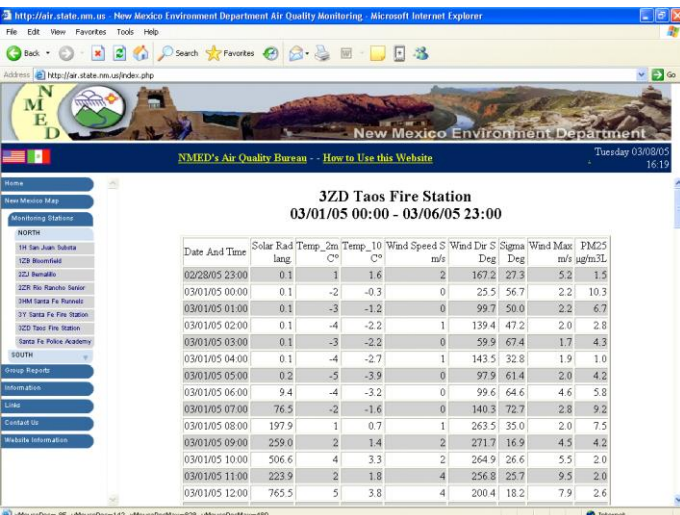


Figure 6- HTML Table

This is a standard web browser table display, with alternating background color for each line to improve readability of the table.

- **File**

A Comma Separated Value CSV file can be downloaded and then used to import the report results into a database program or spreadsheet program.

The report results can be prepared in Microsoft Excel format and then loaded by Microsoft Excel.

- **Graph**

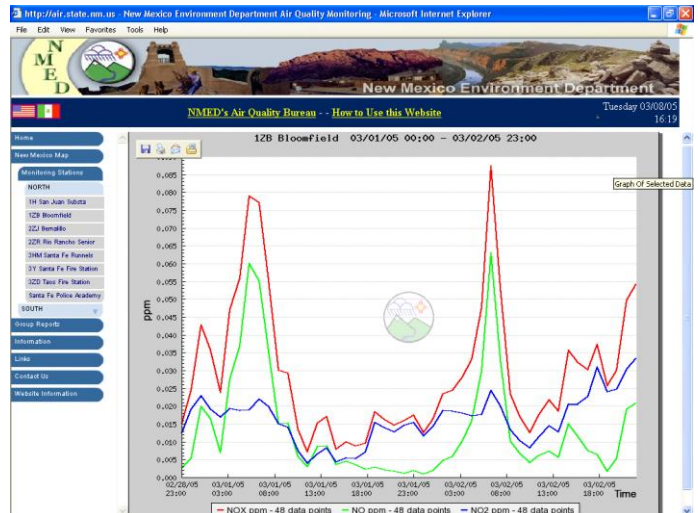


Figure 7- Graph

A selection of graph image sizes are available for selection by use of the radio buttons. The resulting graph file will be of the size selected. The image is initially displayed in the data area, from where it can then be saved locally by the site visitor.

AQM Station Selection Menu

As an alternative to the map navigation, it is possible to use the menu to obtain a list of regions and through sub-menus to stations

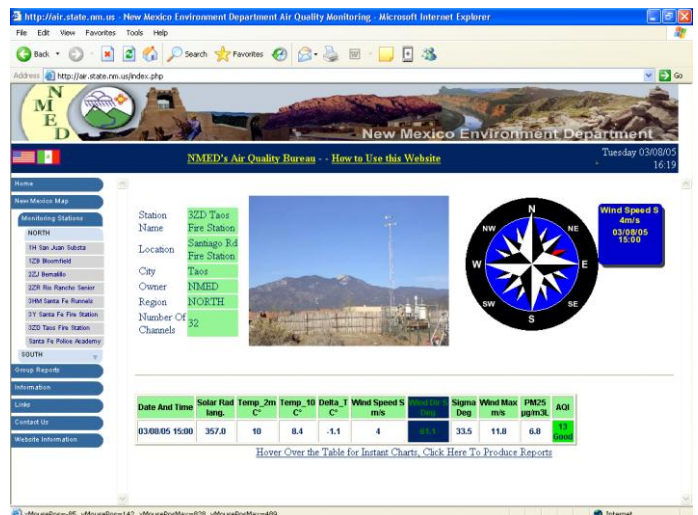


Figure 8- AQM Station Selection Menu

Selecting a station from the menu or from the summary area will take you to the Station Summary Information screen.

Administration Tools

Using some of the most advanced technologies available, EnviWEB is highly configurable and can be extended to integrate your existing web sites and information from multiple systems into a single all encompassing environmental monitoring system.

Administration Menu

The administration screen displays the administration menu, from which all the administration options are selected.

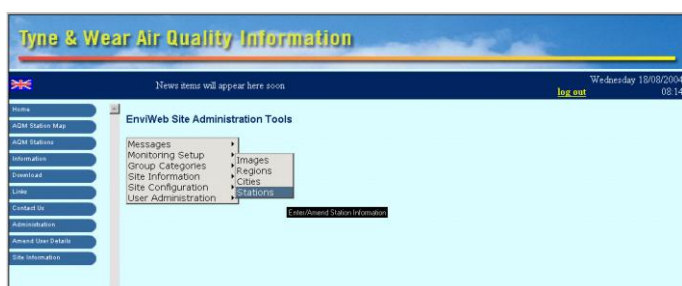


Figure 9- Administration Menu Screen

Each sub-menu will then present a list of options, which can be selected by moving the mouse cursor over the sub-menu items and then left clicking with the mouse to select the menu item. If you pause the mouse cursor over any menu item, a tool-tip will be displayed to give a brief explanation of the menu item currently selected.

Message Translation

The Enviweb system has been designed to be as flexible as possible and fundamental to this design is the ability to translate the web site into as many languages as are necessary.



Figure 10- Message Translation Screen

As the primary language for international communication, the core site language is British English to which any number of additional language translations can be added, including right-to-left languages such as Hebrew, Arabic etc.

Stations

The target of Stations menu item is To add a new station onto the site. the following window displaying all the current known stations that are connected to the site. It's possible to edit a specific station or to add the stations image.



Figure 11- Stations setting screen

Core Settings

Setting up the Default language, Color scheme and SMTP server settings for user registration.

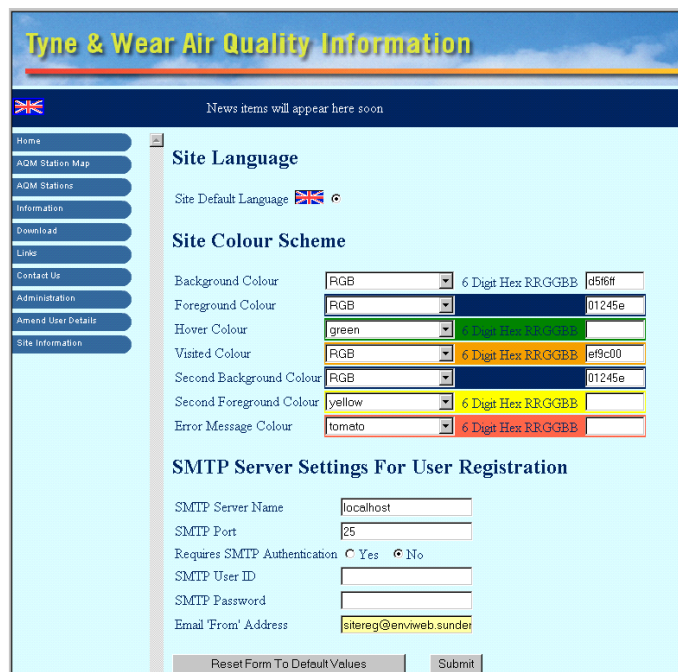


Figure 12- Web Site Core Settings screen



Envitech Europe

PO Box : 22979 Glasgow G67 9DY
 Tel.: +44(0)141 416 2099, Fax: +44(0)141 404 2545
 Email: info@envitech-europe.co.uk
 Web site: http://envitech-europe.co.uk/